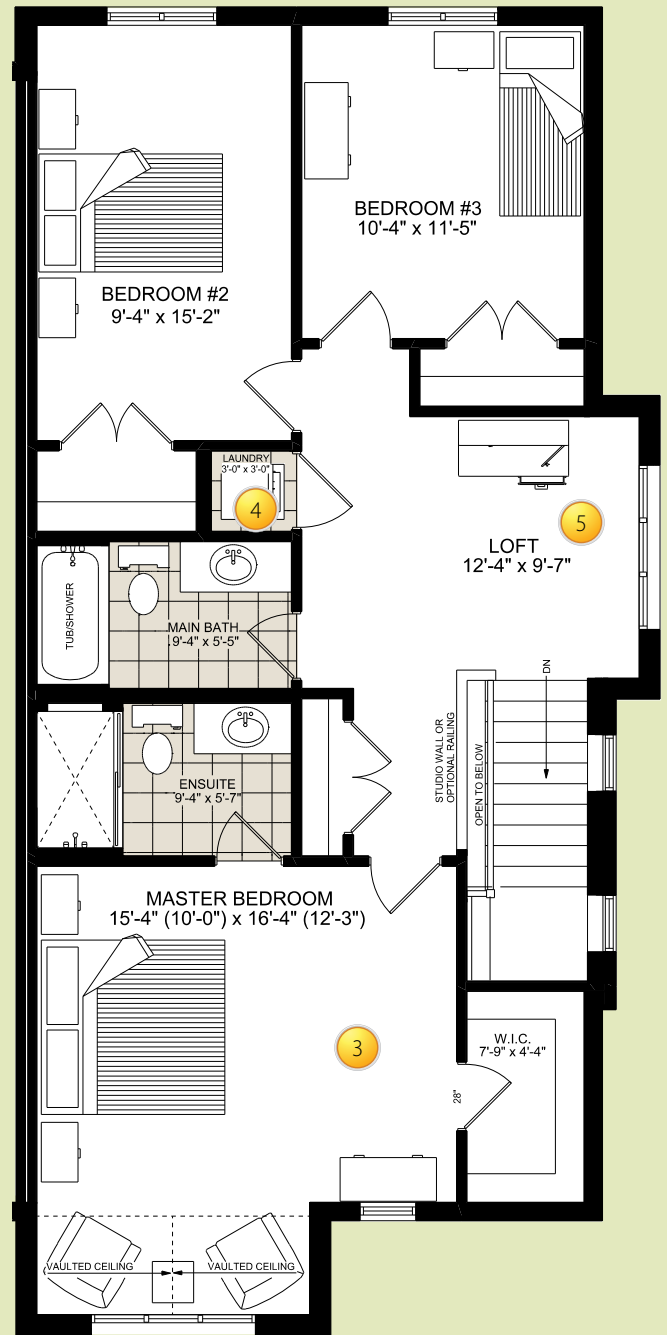


**MAIN FLOOR** TRILLIUM

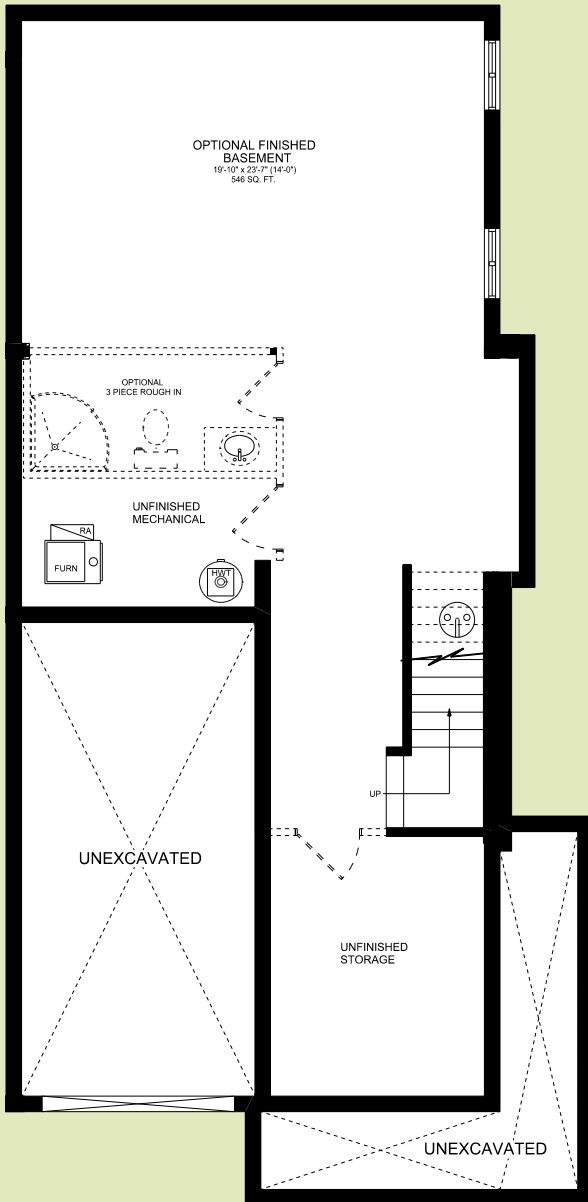


**SECOND FLOOR** TRILLIUM

**TOWNHOME** 2-STOREY

**1770 SQ. FT.**

**3 BEDROOMS - 2.5 BATHS**



1. Open concept granite kitchen
2. Five foot island and optional breakfast bar over-looking large great room
3. Large master suite with vaulted ceiling, walk in closet and ensuite
4. Second floor laundry
5. Second floor loft area
6. 14'-6 x 10 deck

**BASEMENT TRILLIUM**



ARTIST'S CONCEPT



ARTIST'S CONCEPT

All Drawings are an Artist's Concept and May Vary Slightly From the Final Product. E. & O.E. Actual Useable Floor Space May Vary From Stated Area, and Square Footage has been Calculated Based on Useable Living Space According to the Taron Rules, and Does Not Include Garages or Basement Area. Drawings May Show Optional Features Which May not be Included in the Base Price. Appliances are not Include in the Purchase of a new Home. Bulkheads and Box Outs may be Required as Chases for Plumbing and Mechanical. Garage Man Door Location May Vary Subject to Grade. Number of steps in front entry, rear entry (if applicable) and garage entry may vary based on grade. In an Ongoing Review of Our Homeowner's Needs, Changes May be Incorporated Into Our "New Home Features" and Construction Techniques.

